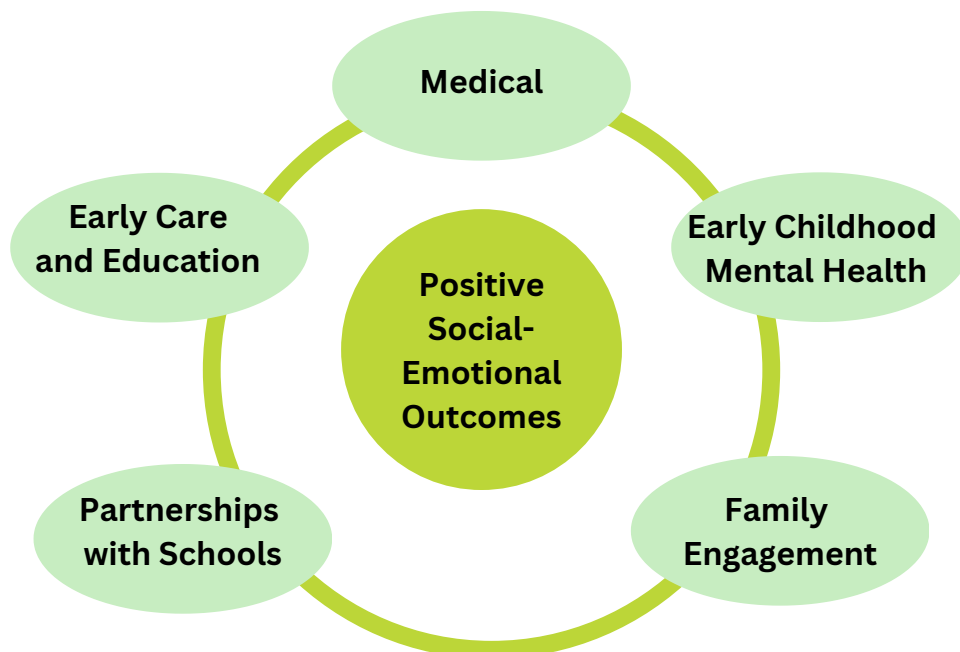

2023-2024 Hall County Rooted in Relationships Snapshot Report

Rooted in Relationships (RiR) is a statewide initiative that partners with communities to implement evidence-based practices that enhance the social-emotional development of children, birth through age 8. RiR supports communities to implement the Pyramid Model and establish a multi-disciplinary stakeholder team charged with developing and implementing a long-range plan to influence the early childhood systems of care to support the healthy social-emotional development of children. Hall County began implementing the RiR initiative in 2015. Their work is coordinated through the Central District Health Department. The mission of the early childhood workgroup is to improve the understanding of child development, early childhood mental health, and social/emotional development for all community members in Hall County. They do this by providing parent engagement opportunities, bolstering networking opportunities between providers, and supporting child care providers after they graduate from RiR.



COMMUNITY EARLY CHILDHOOD SYSTEMS OF CARE

From July 2023-June 2024, thousands of families were served directly and indirectly in Hall County. Activities most frequently took place in the priority areas of Early Care and Education, Family Engagement and Early Childhood Mental Health.

Children and Families Served 2023-2024

Number of Families Served Directly	360	Number of Families Served Indirectly	163	Number of people reached through communication*	652
Number of Children Served Directly	849	Number of Children Served Indirectly	372		



Early Care and Education

The following Early Care and Education activities occurred:

- Sing Play Love training with 40 child care providers
- Baby Doll Circle Time training with 11 child care providers
- Real Colors personal development training with 26 providers/coaches



Family Engagement

The following Family Engagement events/activities took place:

- Project Connect event with 70-80 attendees
- Parents Interacting with Infants (PIWI) classes with 6 families



Early Childhood Mental Health

The following Early Childhood Mental Health activities occurred:

- Mental Health First Aid Training with 25 child care providers

*Reached through Communication typically reflects those reached through a communication strategy (e.g., a billboard, social media post, radio ad, etc.)

PYRAMID MODEL IMPLEMENTATION

About the Implementation

The RIR Pyramid Model implementation offers center-based and home-based child care providers with Pyramid Model training and ongoing coaching support for the implementation of positive strategies to promote young children’s social-emotional development and skills. Providers participate in training, coaching, and collaboration meetings for three years. The following reports information from July 2023 to June 2024.

Sites and Providers

4 coaches provided Pyramid Model training and implementation support to 35 providers including: 17 lead teachers, 5 assistant teachers, 6 directors, 1 director/lead teacher, 2 assistant directors and 4 home-based providers.

- 77% of providers were retained in RiR.

About the Children

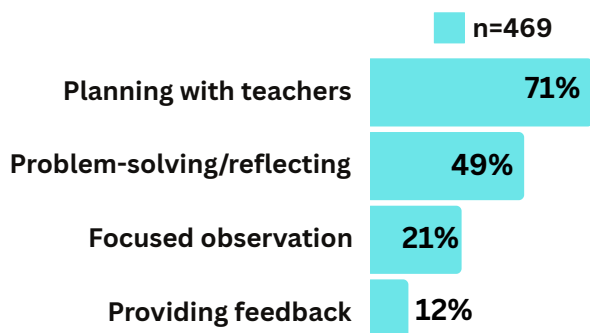
Programs completed a demographic survey about 276 children they serve.

- The majority of children were Caucasian and of the following ages: preschool age (53.6%); toddler age (28.2%), infant age (16.6%), and school age (1.6%).
- 178 children had ASQ-SE results.
 - 97% had typical social-emotional behaviors.

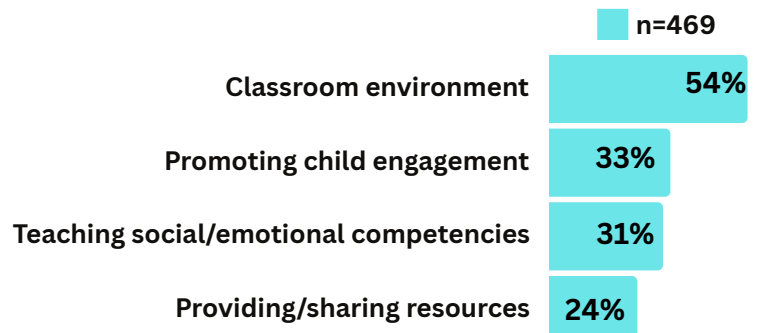
Coaching Activities

The coaches logged 469 coaching sessions with their providers from 7/1/23-6/30/24. 98% of these sessions were in-person and the average session lasted 59 minutes. The following charts describe the most common characteristics of coaching sessions and the most common content of coaching sessions.

The most common coaching activity was **planning with teachers**.

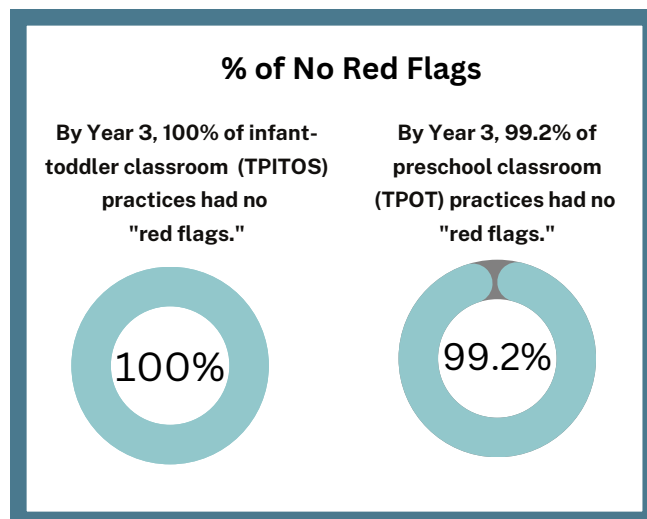
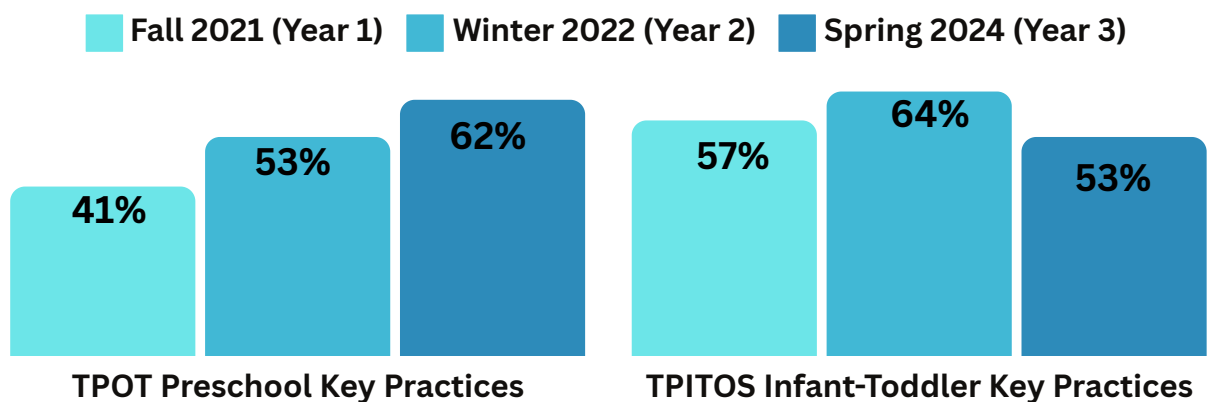


Coaches most frequently helped providers by discussing the **classroom environment**.



2021-2024 Pyramid Model Practices in Place

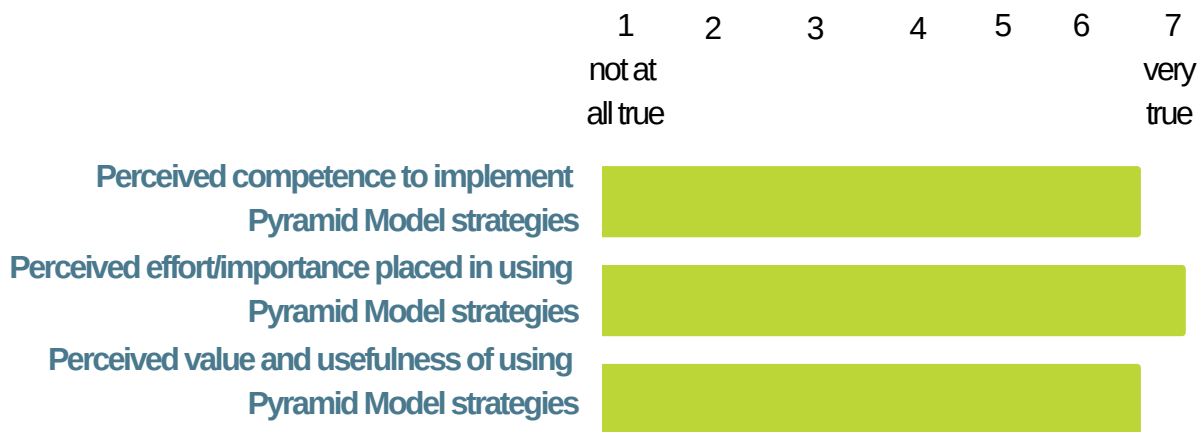
In Hall County, a cohort of providers began in the Fall of 2021.** Lead providers in center-based programs received Teaching Pyramid Observation Tool (TPOT) or Teaching Pyramid Infant-Toddler Observation Scale (TPITOS) observations in the Fall of 2021 (Year 1), the Winter of 2022 (Year 2) and the Spring of 2024 (Year 3). By Year 3, an average of 62% of preschool provider key practices and 53% of infant toddler provider key practices were in place. By Year 3, 100% of infant toddler provider practices received no red flags and 99% of preschool provider practices received no red flags. The goal is to have 80% of key practices in place and 0 red-flagged practices by the end of the 3-year period. Please note some TPITOS providers exited after Year 2, reducing the number of TPITOS observations for Year 3.



**Observation participation numbers are masked as participant numbers at the community level were low. To protect participant privacy n's are not included. To review overall initiative engagement from year to year please see the annual evaluation report. Only individuals with 2 observation time points are included.

Provider Perceptions Year 3

In the Spring of 2024, Year 3 providers (n=10) were asked to complete an Exit Survey which included open-ended quality improvement questions as well as an intrinsic motivation inventory. Mean scale scores were calculated for the following inventory domains related to the Pyramid Model: perceived competence, effort/importance, and value/usefulness. Mean scores are reported for each domain below. Findings demonstrate intrinsically motivating factors are present across each domain, suggesting sustained Pyramid Model practices are likely.



When asked if providers planned to continue to implement Pyramid Model strategies, **100% said yes**. When asked to describe strategies for continued implementation, responses largely focused on implementing pre-existing strategies daily.

"I will continue using the Pyramid Model strategies as they have proven time and again to be successful for me. Knowing that I have met a lot of people in this group that I can continue to reach out to as challenges may arise for support and guidance."
-Provider reflects on continued use of Pyramid Model strategies

100%
of providers found Pyramid Model coaching to be valuable

70%
of providers found Pyramid Module trainings to be valuable

60%
of providers found Provider Collaboration meetings valuable

100%
of providers would recommend the Pyramid Model to a colleague

Snapshot Report prepared by
Kailey Snyder, Ph.D.
Kate Dietrich, BA.
The University of Nebraska Medical Center's
Munroe-Meyer Institute:
A University of Excellence for Developmental Disabilities

